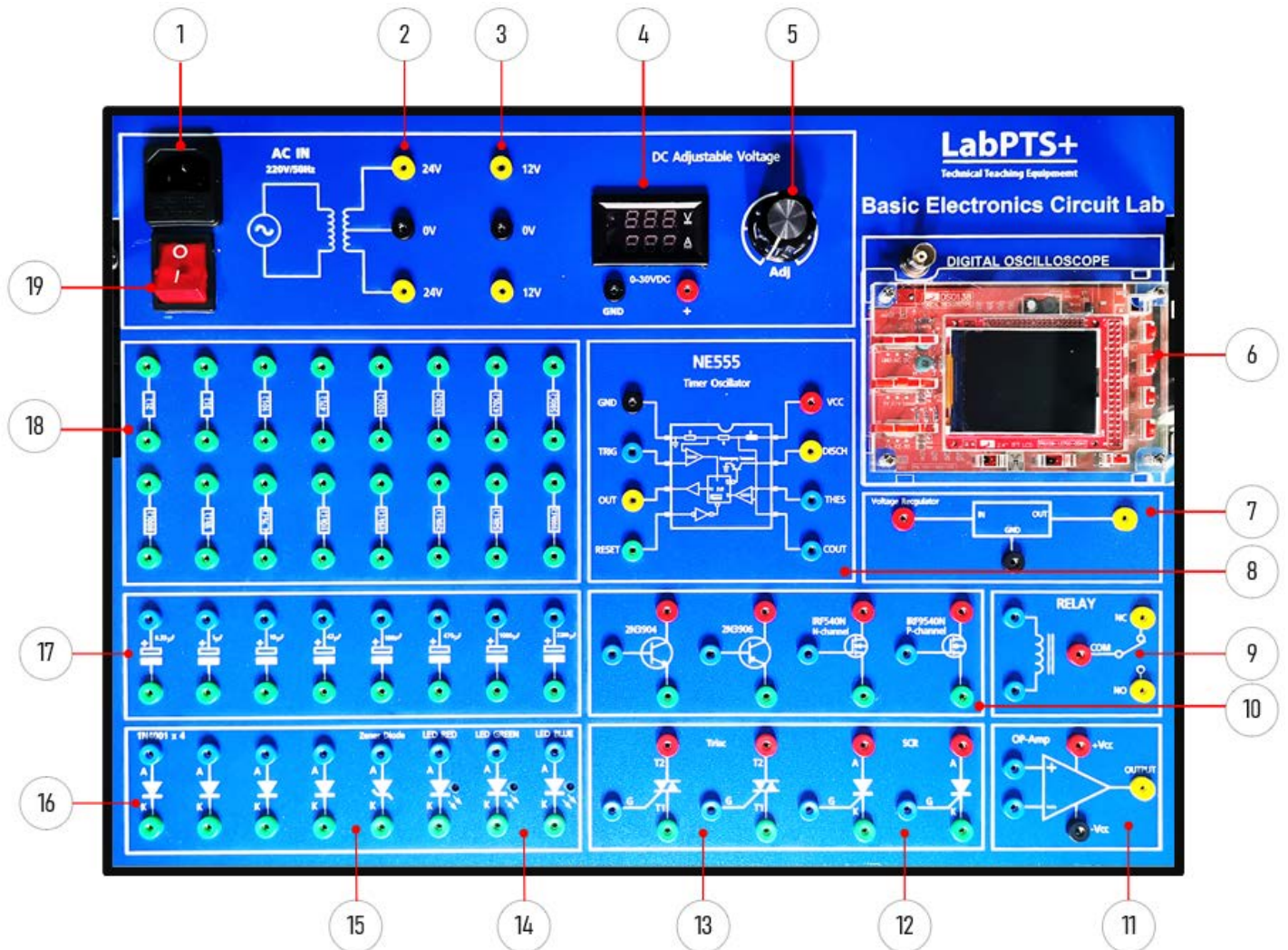


BASIC ELECTRONICS CIRCUITS LAB KITS

FOR EDUCATION IN ELECTRONICS AND ELECTRICAL FIELDS



FEATURE DETAIL

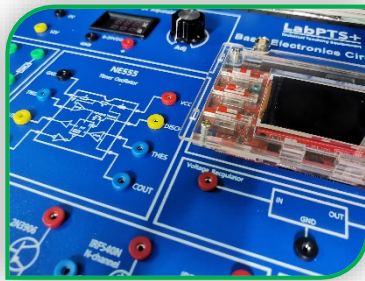
- This is a educational experiment set up to demonstrate circuit connection and characterization of electronic devices. There are electronic devices installed inside the PVC box or inside the bag. Portable and easy to move There are devices used in the experiment such as resistors, capacitors, diodes, transistors, SCR, LED, Op-amp, IC555 etc.
- Learn the operation of electronic devices such as resistors, capacitors, diodes, transistors, SCR, LED, Op-amp, IC555 etc.
- Learn to read electronic devices such as resistors, capacitors, diodes, transistors, SCR, LED, Op-amp, IC555 etc.
- Learn to connect electronic devices such as resistors, capacitors, diodes, transistors, SCR, LED, Op-amp, IC555 etc.
- Learn how to measure electronic devices such as resistors, capacitors, diodes, transistors, SCR, LED, Op-amp, IC555 etc.

ACCESSORIES LAB KITS

- BASIC ELECTRONICS CIRCUITS LAB Kits
- AC Power Cable.
- 2 mm Banana Jack Cable
- Worksheet Document.

BASIC ELECTRONICS CIRCUITS LAB KITS

FOR EDUCATION IN ELECTRONICS AND ELECTRICAL FIELDS



SYSTEM CONFIGURATIONS

Module Interface	Description	Channel
1.Plug in Power Supply	220V 50 Hz	1
2 Power adapter ac	24V	1
3.Power adapter ac	12V	1
4 Digital display adjustable DC power supply	0-30V,2A	1
5 Adjust value	0-30	1
6. Mini Digital Oscilloscope	- Max real-time sampling rate: 1MSp/s analog Bandwidth :0-200khz - Sensitivity: 1mV / div - 5V / div - Maximum input voltage: 50Vpk (1X probe) - Resolution: 12 bits - Record length: 1024 points - Time base range: 500s / Div - 10us / Div - Trigger modes: Auto, Normal and Single - Power supply 9V DC(8-12V)	1
7.Regulator	5V	1
8.Timer Oscillator	NE555	1
9. Relay	12V	1
10.Transistor	2N3904,2N3906	4
11.OP-Amp	IC741	1
12.SCR	1A,	2
13.thyristors,	1A	2
14.LED	5V, RED, GREEN, BLUE	3
15.Zener Diode,	5V	1
16.Diode,	1N4001,	4
17.Capacitor	0.33 μ F , 1 μ F, 10 μ F, 47 μ F, 100 μ F, 470 μ F, 1000 μ F, 2200 μ F	8
18.Resistor	2 Ω ,3 Ω 10 Ω ,100 Ω ,330 Ω ,470 Ω ,580 Ω ,600 Ω ,1k Ω ,4.7k Ω ,10k Ω ,15k Ω ,20k Ω	13-16
19.Switch On/Off	220V	1